

Deepening connections

Wipfli annual report highlights
Fiscal year 2022

W The world is continuing to experience immense challenge, change and outright transformation, and in FY22, ended May 2022, the people of Wipfli rose to meet those challenges.

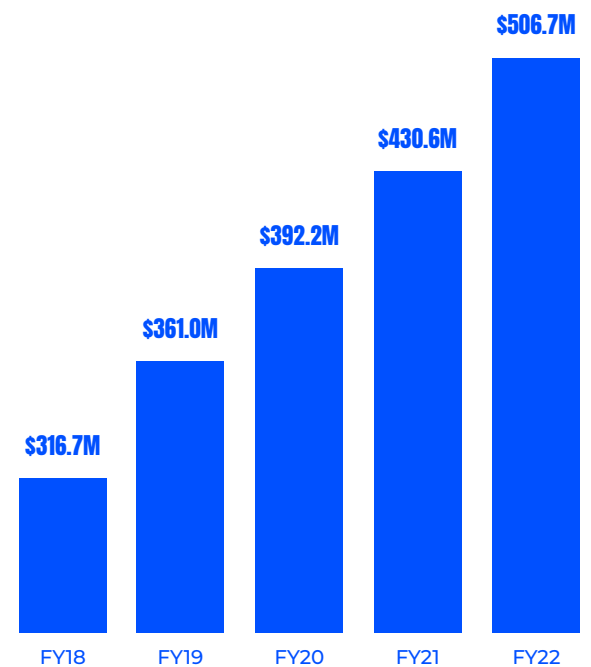
Wipfli delivered outstanding value for our clients and helped them navigate the environment with the confidence of our trusted partnerships and our expertise to guide them.

Our sincere thanks to everyone who made our FY22 success possible.

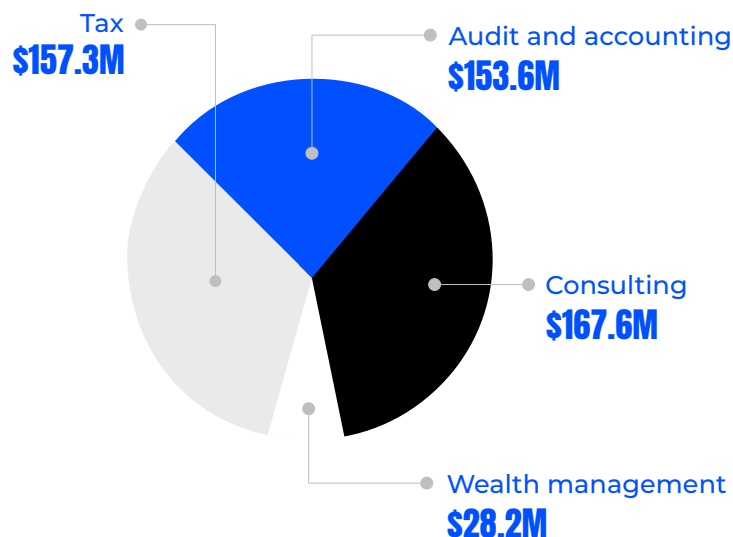


— Kurt Gresens, managing partner

Net revenue FY18-FY22



Net revenue by service



Financial overview

\$506.7M

FY22 net revenue

17.6%

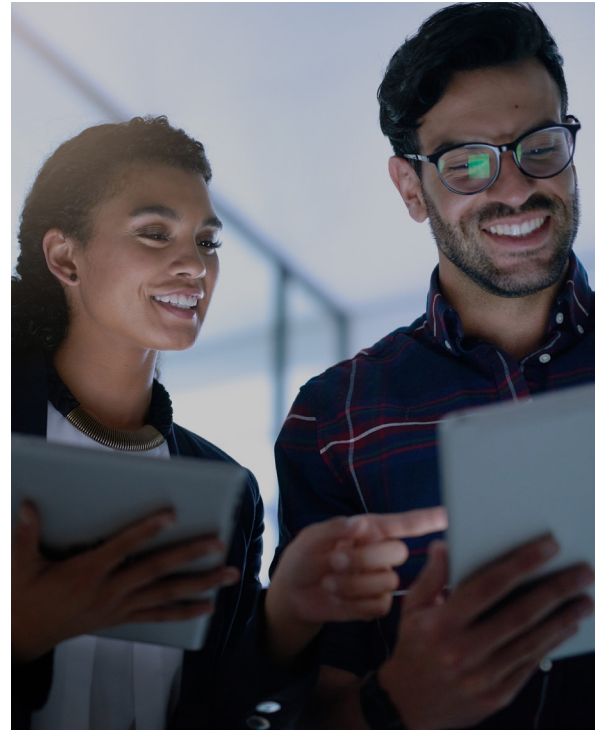
Increase from FY2021

WIPFLI

Our work

Our curiosity and deep commitment to our clients drove us to deliver more integrated solutions and create a deeper impact. From finances and strategy to people, processes and technology, we delivered solutions that changed the perspectives of our clients. Together, we turned obstacles into opportunities.

- We deepened our connections with clients by offering expanded, integrated solutions to tear down silos blocking sustainable success.
- We shared our perspectives by producing thought leadership, on-demand webinars and groundbreaking, original research to support our clients in keeping abreast of industry trends and impactful new services.
- We succeeded in maintaining the high opinion of our clients, garnering a strong client experience score of 88.
- We expanded our geographical reach, services and industry expertise through four mergers and acquisitions.



Our people

We strengthened our ties to our team by delivering on a renewed commitment to give our associates the experience and culture they deserve.

- We expanded our well-being benefit to an anytime opportunity to engage with wellness coaches, well-being resources and other associates through a comprehensive wellness app.
- In addition to providing unlimited flexible time off, Wipfli dedicated well-being days as extensions of regular holiday office closures, which gave associates several opportunities for extended time off to rejuvenate.
- Wipfli enhanced our focus on career growth through new goal setting, performance coach support, career growth opportunities and learning support.
- We expanded the mission of the Wipfli Foundation by adding an associate donation match to make lasting community impacts where we live and serve. In addition, the foundation matched associate donations to two global crises: COVID-19 impacts in India and humanitarian aid to Ukraine.



Our diversity

We increased our inclusion efforts inside and outside the firm, expanding educational and cultural experiences.

- Our associates made it a point to understand and connect with topics important to colleagues and clients. Associates recorded more than 16,000 hours of DEI-related individual engagement through participation in Wipfli-sponsored events and 43 business resource group leaders and sponsors collectively spent more than 4,000 hours on DEI-focused efforts.
- A majority of surveyed associates said they consider diversity, equity and inclusion important at Wipfli (86%) and that if they raised a concern about discrimination, Wipfli would do what is right (84%).
- Veterans-focused business resource group Valor launched and joined three other business resource groups (BRGs) in their collective efforts to raise awareness and support for underrepresented populations.



Voices of associates

Our BRGs serve as advocates for associates and advisors on our firm's DEI journey. Each BRG is defined by its own unique experience and perspective. What unifies them is their commitment to diversity and their work to eliminate challenges that their demographics face in the work environment.



Women of Wipfli's purpose is to cultivate an environment where women have an equitable opportunity to achieve their goals and find their version of success.



Wipfli Pride is made up of LGBTQ+ associates and allies dedicated to supporting an inclusive community at Wipfli and beyond.



Embrace's purpose is to create lasting, positive impact through fostering an inclusive and equitable environment that values diversity and supports a feeling of belonging for the people Wipfli serves, employs and works with.



Wipfli Valor's mission is to create a community to honor and active military service members, veterans and their families.

To learn more about our FY22 successes, visit annualreport.wipfli.com.